



Sitemap Generator v5.0

Quick Start Guide

Published 2/1/2008



TABLE OF CONTENTS

Introduction	3
Application Walk Thru.....	3
1. Install prerequisites.....	3
2. Install the KeyLimeTie Sitemap Generator	3
3. Start Sitemap Generator	4
4. Start tab	4
5. My Websites tab	5
6. Preferences tab.....	6
7. Spider Website tab.....	9
8. Edit Results tab	10
9. Sitemaps tab	11
10. Scheduling tab.....	13
11. Help/Support.....	14
Setup your Google Account	15

Introduction

The purpose of this guide is to introduce you to the software and get you up and running very quickly. At first, all of the features and options may seem overwhelming, but after reading through this guide, you should feel very comfortable.

Application Walk Thru

1. Install prerequisites

The software requires the Microsoft .NET Framework v2.0. The download is approximately 26 MB and installs in 2-3 minutes. It can be downloaded here:

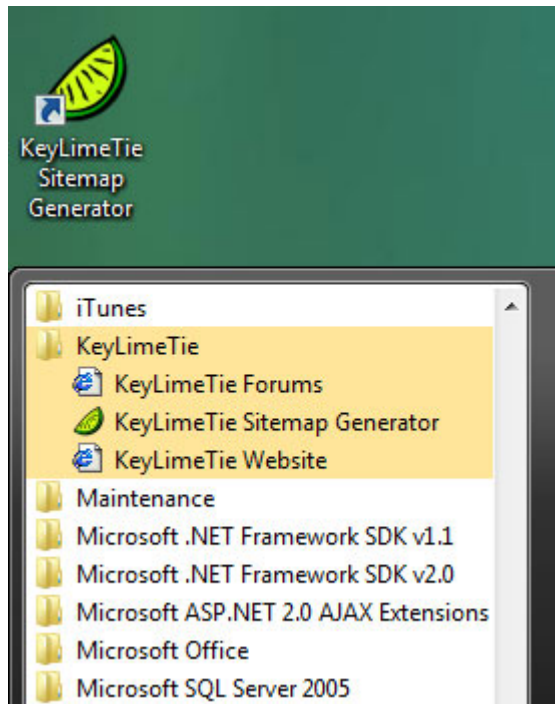
<http://www.microsoft.com/downloads/details.aspx?FamilyID=0856EACB-4362-4B0D-8EDD-AAB15C5E04F5&displaylang=en>

2. Install the KeyLimeTie Sitemap Generator

If you haven't downloaded the Sitemap Generator software, please download it here:

<http://www.keylimetie.com/Products/Sitemap-Generator/>

The installation is very quick. Once completed, you'll see a desktop icon and a new Programs menu entry.



3. Start Sitemap Generator

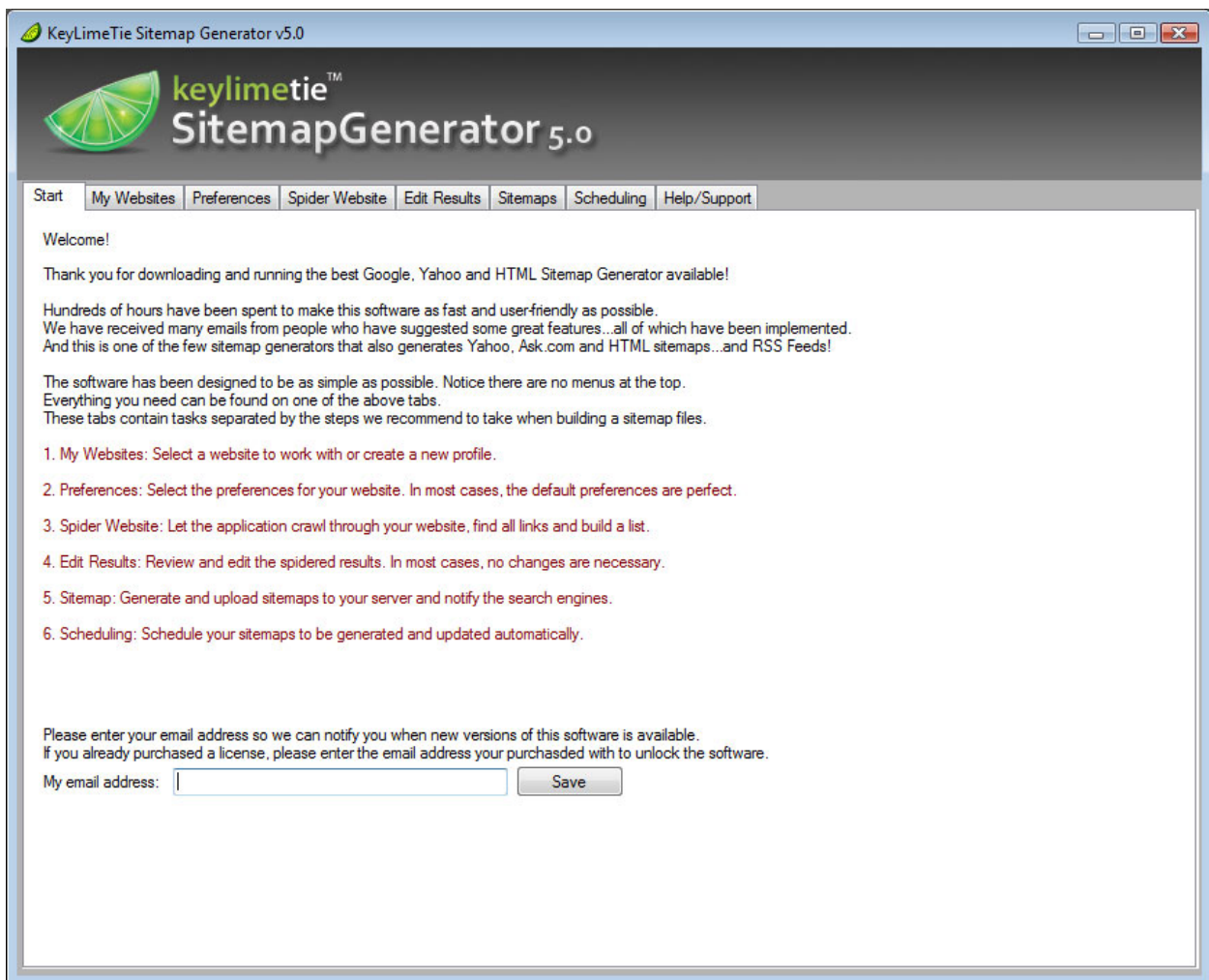
Either double-click the desktop icon or navigate through the Program menus. When it starts up, a splash screen will appear and your license will be authenticated. Trial users will get a message box stating no license was found. Simply click "OK".

The tabs across the top of the application are in the order you should work.

4. Start tab

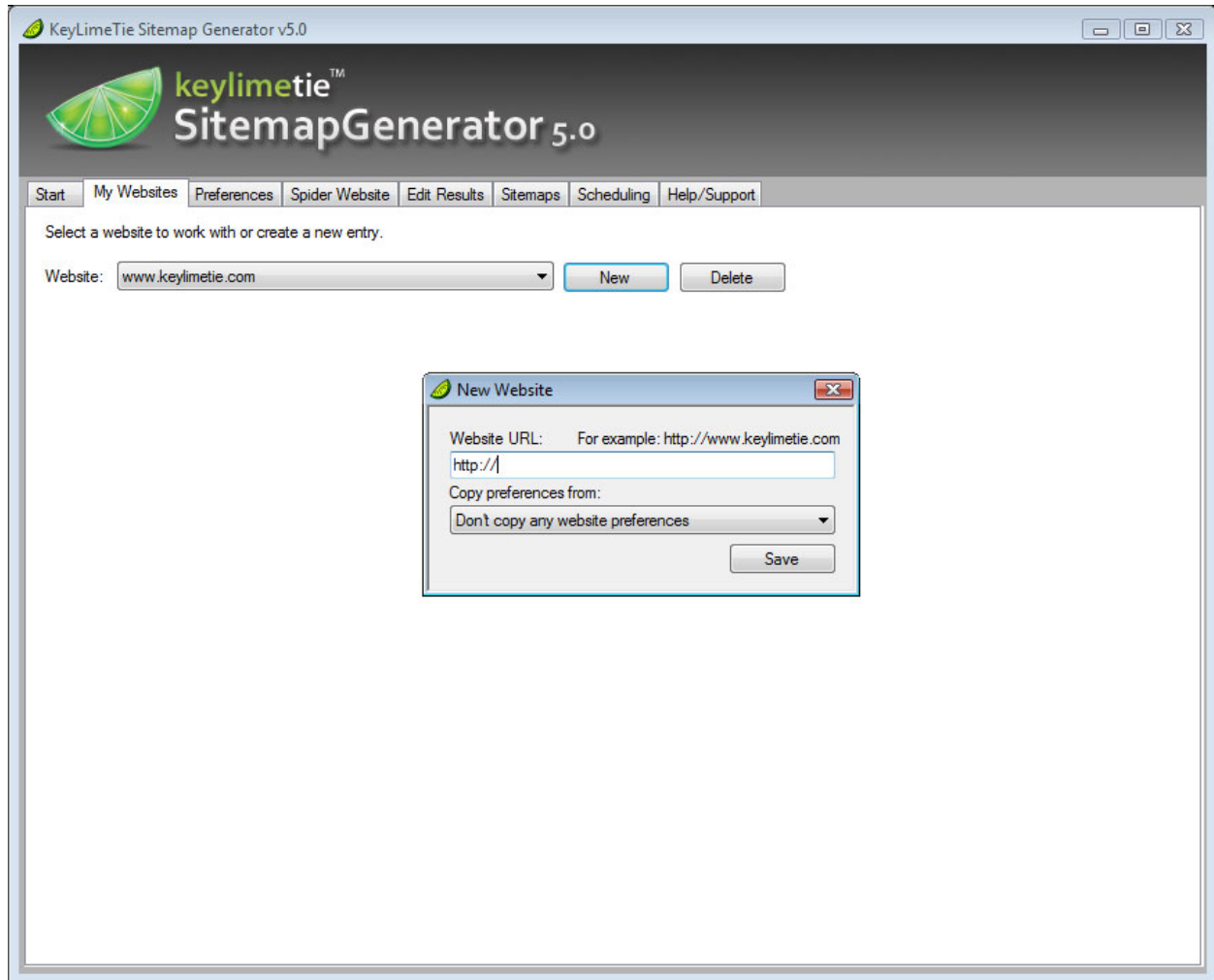
The purpose of this tab is to give you a real brief description of the other tabs.

If you have purchased a license or would like to be notified when new versions are available, you can enter in your email address.



5. My Websites tab

On this tab, you enter in your website address. You can enter in as many websites as you like. When adding a new website, there is an option to copy the preferences of another website you have already entered. This isn't applicable for the first website you enter, but might be useful when entering subsequent websites.



6. Preferences tab

This is the only tab where users typically have questions. There are a lot of options and some of them may be unfamiliar to you. As a general rule, the default preferences are perfect for most websites. Some websites may require minor changes to the preferences. Next to each option is a short description and example. We will now go through each preference in detail.

Select the default values to be applied. Blue fields are required.

Website:

Change Freq.: Priority: GZip Sitemaps (useful for sites with over 20,000 URLs) Show Advertising

Last Modified: Date: If "Use server's modified date" selected, leave blank to use current date.

Spider Start Directory: Use when you don't want to spider the entire website. Specify the folder. Example: "/forums/"

Ignore Querystring: Separate fields with commas. Example: enter "session" for "http://www.mysite.com?session=12345".

Ignore URL Strings: Separate fields with commas. Example: enter "addtocart" to ignore "http://www.site.com/addtocart.aspx".

Ignore Folders: Separate folders with commas. Example: enter "/admin/" to ignore the "admin" folder.

Valid file extensions: Separate extensions with commas. Example: "htm,html,asp,php,aspx"

Default pages: Separate pages with commas. Example: "index.htm,index.asp,default.htm"

Page timeout: For example, enter "30" if a page request should be cancelled after waiting 30 seconds.

Pause time: For example, enter "3" to pause 3 seconds between each page request. This will put less stress on the server.

Sitemap name prefix: Used for Google and HTML sitemap files names. "sitemap" is the default, but this can be whatever you want.

FTP Host: FTP Login: FTP Password:

FTP Remote Path: For example, enter "/www/" to place the sitemap in the "www" folder.

Website Local Path: Useful when running this software on server or if you want to FTP with the website.

Port Number: Ignore commented out code Formatted XML output

Automatically save spider progress every pages. This feature allows you to stop spidering and continue later.

Import a Sitemap - Do you have a sitemap already that you would like to begin with?

- **Change Freq:** Google wants to know the change frequency of your web pages. The application cannot determine this, so it asks you for a default value. After you get through the preferences and review your results, you'll have a chance to change this for any of your pages. So for now, select a change frequency that is accurate for most of your web pages.
- **Priority:** Google wants to know how important each web page on your website is in regards to other pages. A value of 1.0 is very high. Your home page might be a 1.0. A value of 0.1 is very low. Your "About Us" page might be 0.1. This setting is really only important for websites that have over 5,000 web pages. This tells Google which pages you want them to index first in case they decide to index your website in batches over a period of time. If you have less than 5,000 web pages, Google will usually index your entire website all at once. In that case, leave the priority to 0.5. Note: Priority has nothing to do with other websites, so do not set all web pages to 1.0 thinking you'll have some advantage.

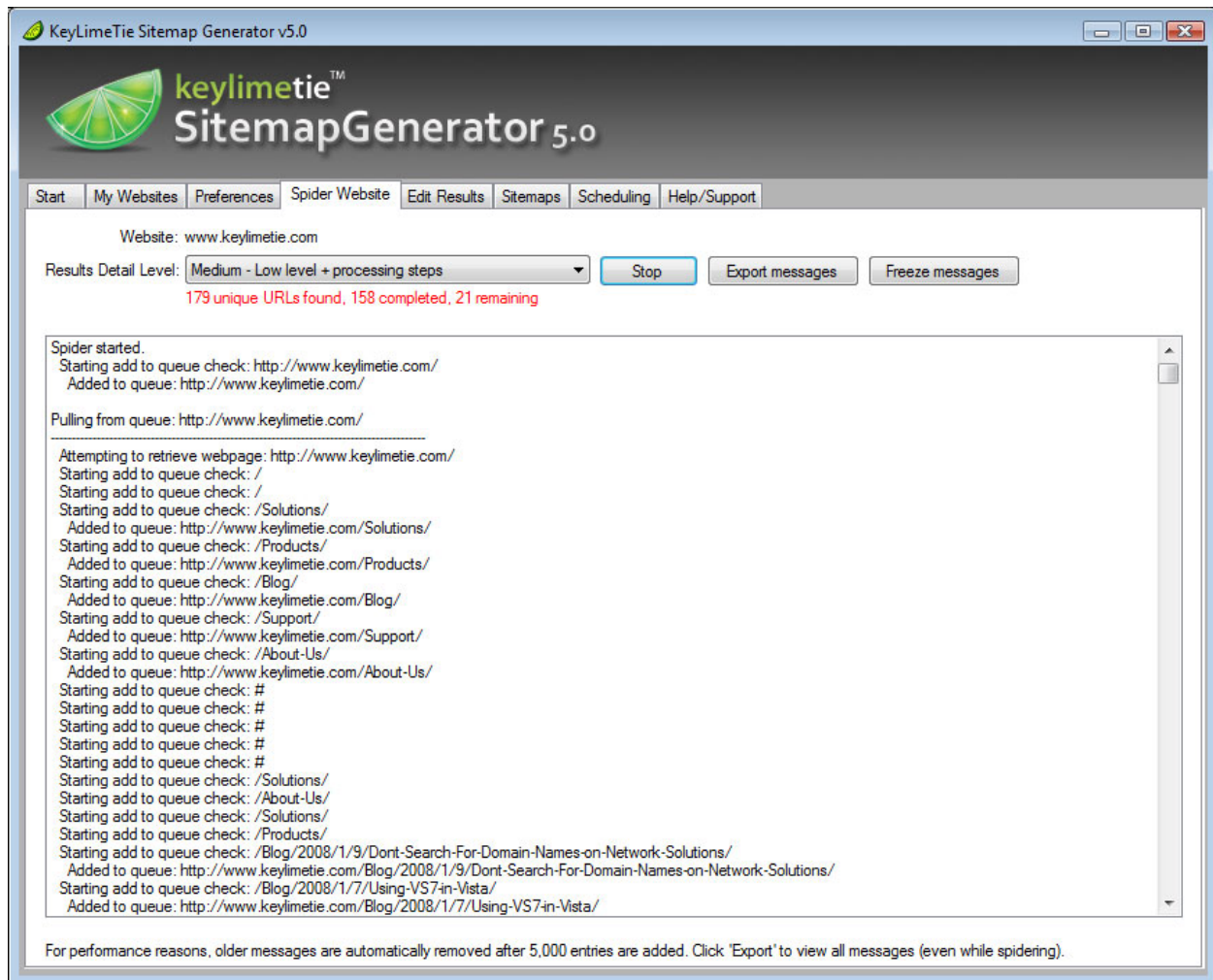
- **GZip Sitemaps:** GZip is very similar to WinZip. If your website has a lot of web pages (over 20,000), Google would like you to compress your sitemap so they can retrieve it faster. It is not required, but Google prefers it. If your website isn't that large, do not check this option.
- **Show Advertising:** You'll notice a small advertising banner in the top right corner of the application. Every 10-20 seconds a new banner displays. You have the option to turn this off. This has nothing to do with the sitemaps.
- **Last Modified:** Google wants to know when each of your web pages was last modified. The application choices here are:
 - *Use server's modified date:* This is the best option. As the software spiders through your website, it will ask the server when the file was last modified. If the server cannot provide the date, the application will use the date entered in the box next to this field. If this field is blank, it will use today's date.
 - *Use today's date:* If this option is selected, every web page will have a last modified date of today.
 - *Let me specify the date:* If this option is selected, the date entered in the box next to this field will be used for every web page.
- **Spider Start Directory:** Very few websites don't have their home page in the root directory. In this case, you can specify where the spidering needs to start.
- **Ignore Querystring:** A querystring is the values passed in the URL. For example: `http://www.website.com/home.aspx?sessionid=12345&page=home` has querystring values `sessionid=12345` and `page=home`. Most websites try to pass these values page to page by other means, but some use querystrings. In this example, the person visiting this web page has a sessionid of 12345 (some random value generated by the website). Another visitor might have a sessionid of 23456. The point is, this has nothing to do with the web page and Google doesn't want it. In this example, you would want to put sessionid in the "Ignore Querystring" field.
- **Ignore URL Strings:** In very few cases, you might want to ignore pages that have certain words. For example, suppose you have an ecommerce site and when visitors add an item to their cart, it navigates to `addtocart.aspx`. The "Add to Cart" page has no value in being indexed in Google as it doesn't contain content pertaining to your website. You might want to ignore this page.
- **Ignore Folders:** Some websites have folders of web pages and files they do not want indexed by any search engine. In this case, you can specify the folder and the Sitemap Generator will know to ignore it when found.
- **Valid file extensions:** This list contains the extensions of files that the spider should add to the sitemaps and spider for more links.
- **Default pages:** When default pages are specified, the application will remove them from the url. For example, if the application finds `http://www.website.com/home.htm` and `home.htm` is a default page, it will tell the search engines that the URL is `http://www.website.com/`. This is beneficial in case you decide you want to make `newhome.htm` the new default page. Since the search engines indexed `http://www.website.com/` (without the page name), you can change it to whatever you want and your indexed results will still work when people search for your website. This is the "search engine friendly" approach.
- **Page timeout:** Number of seconds the application should wait for a response from your website. 30 seconds is a good default.

- **Pause time:** Number of seconds the application should pause between each web page request. If you have a powerful web server, I would leave it at 0. If you are worried about stressing the server too much, a 2 or 3 second wait might be appropriate.
- **Sitemap name prefix:** File name prefix when the Google and HTML sitemaps are generated.
- **FTP Host, Login and Password:** After generating Google, Yahoo and HTML sitemaps and RSS Feeds, you can have the application FTP the files to your web server. You would need to provide a valid host, login and password.
- **FTP Remote Path:** Not all websites are located in the root of the server. In this case, you can specify the path to FTP the files to.
- **Website Local Path:** If you want to run the software on your web server and have the sitemaps copied to the website directory, you would specify the website folder path here.
- **Website Port Number:** The standard internet port number 80. If your website runs on a different port (very unlikely) or if you want to run the sitemap generator against a test environment where the port number may be different, enter the port number here.
- **Ignore commented HTML/JavaScript:** Some websites have HTML, JavaScript or other code that is commented out and not executed. The sitemap generator will find these links unless you check this option.
- **Format Sitemap Output:** Some users like to view the sitemap file's contents. If this preference is unchecked, the text is not formatted nicely in order to save space and decrease the file size. If this preference is checked, the text is nicely formatted and easy to read.
- **Automatically save spider progress every:** If you have used other sitemap generators, you will immediately notice how much faster this application is. The reason why is because all of the work is done in memory. Most sitemap generators use a database and it takes a lot of time to constantly query and update a database. This preference is beneficial for sites with over 1,000 web pages. Here you can specify how often you would like the progress of the spidering to be saved. In the case you lose power to your computer or the internet connection, this option allows you to pickup where you left off.
- **Load from Robots.txt:** Some websites have a robots.txt file on the server with some of the above preferences defined. This button will retrieve the robots.txt file, parse through it and set the preferences. If you never heard of this file, you most certainly don't have one on your website.
- **Import Sitemap From A File:** If you already have a Google sitemap, you can import it into the application. This button requires the sitemap to be on your computer.
- **Import Sitemap From Website:** If you already have a Google sitemap on your website, you can import it into the application. This button requires the sitemap to be on your website.
- **Delete Existing Sitemap:** If you would like the current sitemap deleted from your computer and start over for the website, click this button. It will not delete the sitemap from your website.

As you can see now, the preferences really aren't that complicated. Chances are, you won't modify anything except the FTP credentials.

7. Spider Website tab

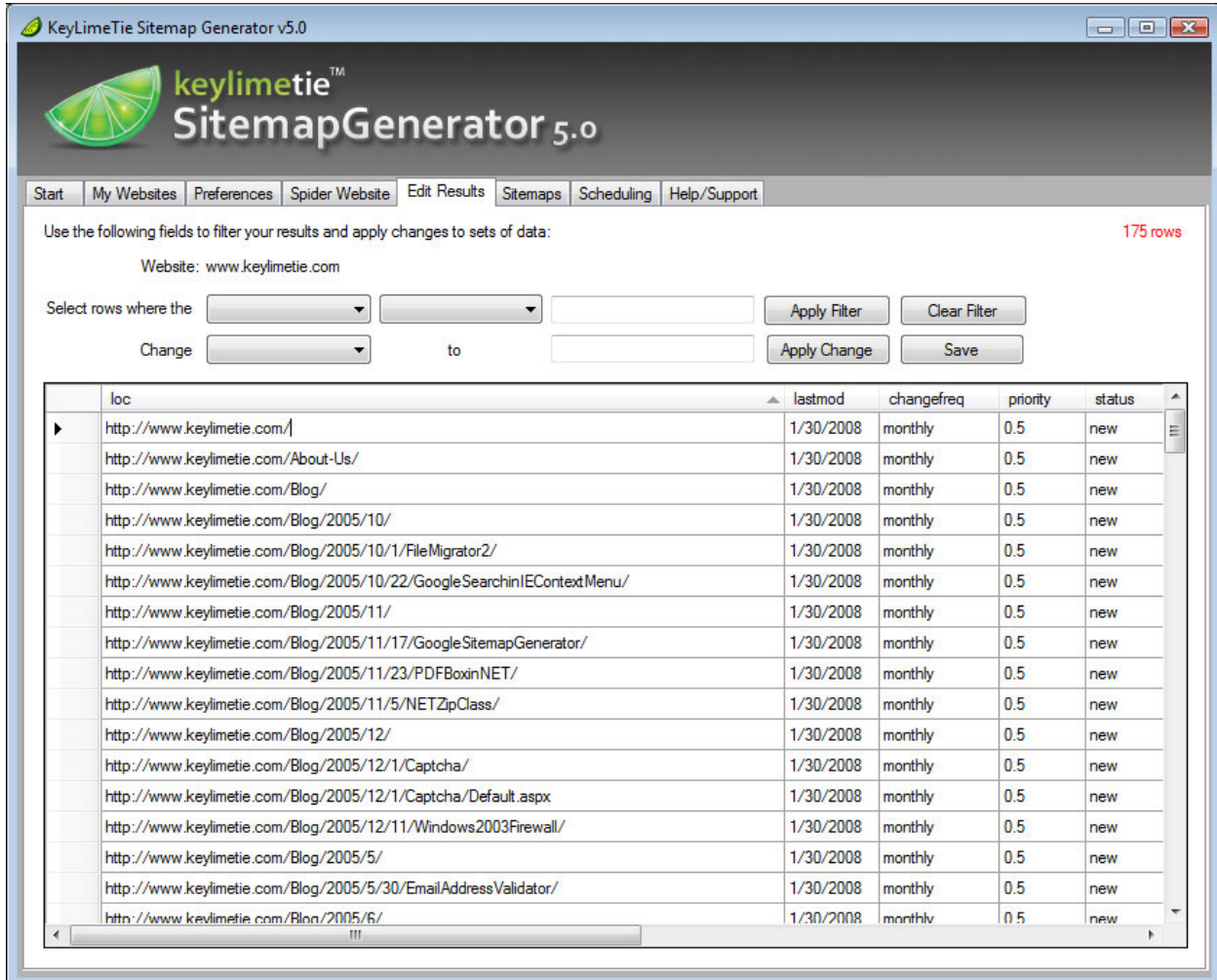
Once you have your preferences all set, it's time to spider your website. Once you click the "Start" button, the application will search through your entire website (just like Google, Yahoo and other search engines) and find all of the web pages.



- **Results Detail Level:** How much spidering detail do you want to see? If your site is very large (over 50,000 web pages), we recommend no messaging. Messaging can slow the spidering a little. We recommend low messaging unless you want to debug what's going on. For example, some users will notice pages being found that they didn't know existed or thought they had removed. With High messaging, this person can review the messages and see exactly where the page was found.
- **Export messages:** If you would like to review the messages while the application is spidering or not, click this button and all messages will be exported to a plain text file.
- **Freeze messages:** You can also review the messages while the application is spidering. For performance reasons, only 5,000 entries are shown at a time. If you see the list start to scroll and you want to freeze it to read the messages, click this button.

8. Edit Results tab

After the spidering has completed, you have the option to edit your results. You can edit the entries or delete entries you do not want in your sitemap.



KeyLimeTie Sitemap Generator v5.0

keylimetie™ SitemapGenerator 5.0

Start | My Websites | Preferences | Spider Website | **Edit Results** | Sitemaps | Scheduling | Help/Support

Use the following fields to filter your results and apply changes to sets of data: 175 rows

Website: www.keylimetie.com

Select rows where the

Change to

	loc	lastmod	changefreq	priority	status
▶	http://www.keylimetie.com/	1/30/2008	monthly	0.5	new
	http://www.keylimetie.com/About-Us/	1/30/2008	monthly	0.5	new
	http://www.keylimetie.com/Blog/	1/30/2008	monthly	0.5	new
	http://www.keylimetie.com/Blog/2005/10/	1/30/2008	monthly	0.5	new
	http://www.keylimetie.com/Blog/2005/10/1/FileMigrator2/	1/30/2008	monthly	0.5	new
	http://www.keylimetie.com/Blog/2005/10/22/GoogleSearchinIEContextMenu/	1/30/2008	monthly	0.5	new
	http://www.keylimetie.com/Blog/2005/11/	1/30/2008	monthly	0.5	new
	http://www.keylimetie.com/Blog/2005/11/17/GoogleSitemapGenerator/	1/30/2008	monthly	0.5	new
	http://www.keylimetie.com/Blog/2005/11/23/PDFBoxinNET/	1/30/2008	monthly	0.5	new
	http://www.keylimetie.com/Blog/2005/11/5/NETZipClass/	1/30/2008	monthly	0.5	new
	http://www.keylimetie.com/Blog/2005/12/	1/30/2008	monthly	0.5	new
	http://www.keylimetie.com/Blog/2005/12/1/Captcha/	1/30/2008	monthly	0.5	new
	http://www.keylimetie.com/Blog/2005/12/1/Captcha/Default.aspx	1/30/2008	monthly	0.5	new
	http://www.keylimetie.com/Blog/2005/12/11/Windows2003Firewall/	1/30/2008	monthly	0.5	new
	http://www.keylimetie.com/Blog/2005/5/	1/30/2008	monthly	0.5	new
	http://www.keylimetie.com/Blog/2005/5/30/EmailAddressValidator/	1/30/2008	monthly	0.5	new
	http://www.keylimetie.com/Blog/2005/6/	1/30/2008	monthly	0.5	new

- **Select rows where the:** This first row of fields gives you the ability to filter what results you see. For example, if you only want to see rows where the word "product" exists in the URL, change the fields to: Select rows where the loc contains product. Then click "Apply Filter". Click "Clear Filter" to remove all filtering options.
- **Change:** You can edit entries one-by-one or you can change them in groups. For example, if you wanted to change the "changefreq" from monthly to daily for all pages, you would change the fields to: Change changefreq to daily. Then click "Apply Change". Be sure to save.

Your results are now ready to be generated into sitemaps!

9. Sitemaps tab



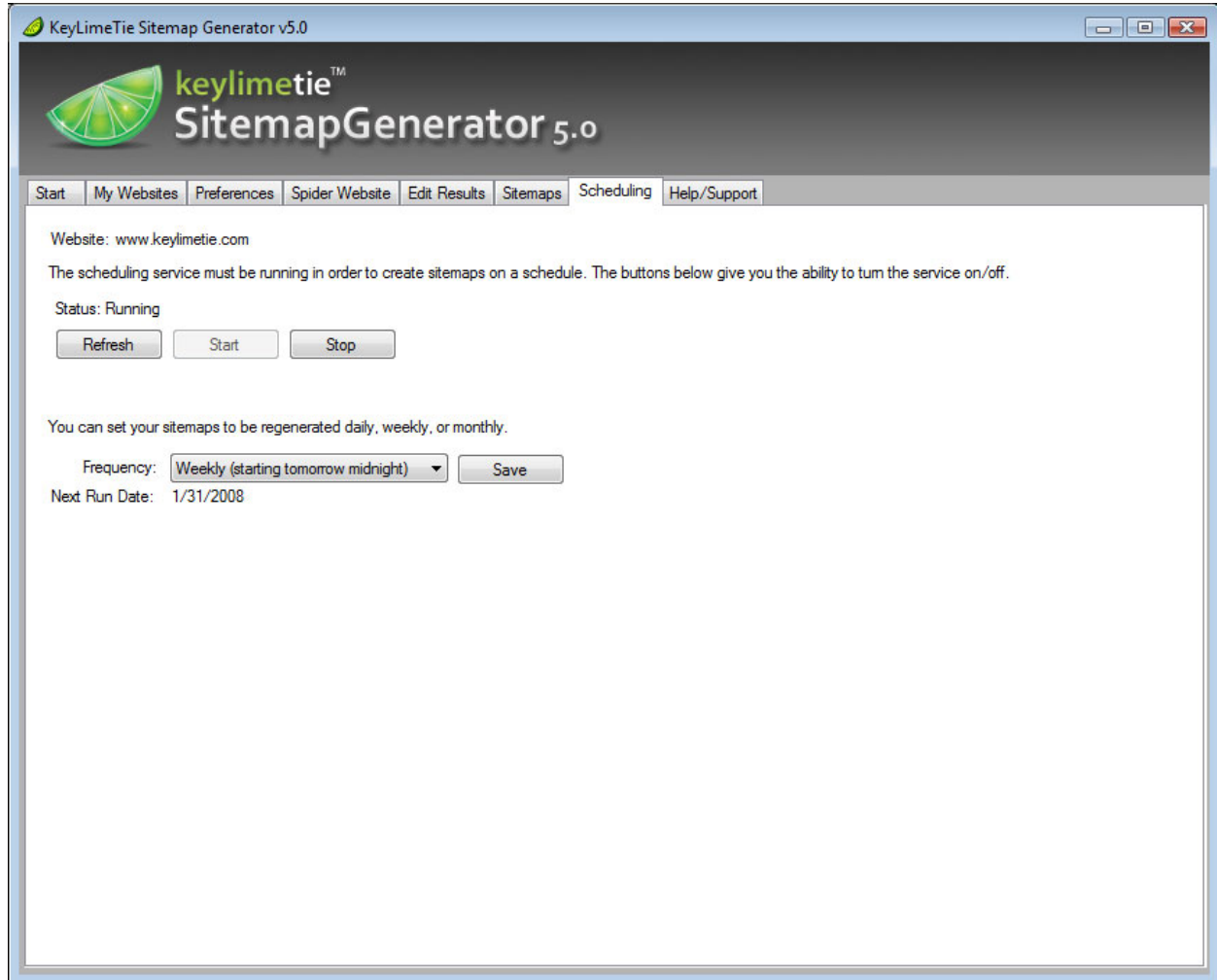
- **Search Engines:** Select the formats you would like generated. The available choices are: Google, Ask.com, Yahoo, HTML and RSS Feeds.
- **Actions:** The following actions are available:
 - **Generate Sitemap:** Generates the sitemap file for each selected format.
 - **FTP Sitemap:** FTP's your sitemap files(s) to your website. Note: You must enter FTP credentials into the Preferences tab for this button to be enabled.
 - **Copy Sitemap:** Copies your sitemap files(s) to your website. Note: You must enter a local website path into the Preferences tab for this button to be enabled.
 - **Notify Google:** If you have already setup a Google account, this button will tell Google that your sitemap has been updated and needs to be reindexed in their search engine. If you have not setup an account, skip this for now as we'll go over Google Account later in this guide.

- **Notify Ask:** This button will tell Ask.com that your sitemap has been updated and needs to be reindexed in their search engine.

Your sitemaps are done!

10. Scheduling tab

When the Sitemap Generator was installed on your computer, a separate service was installed that handles scheduling. The top area of this tab allows you to start and stop the service.



- **Frequency:** If the Sitemap Generator service is running and you would like your sitemaps to be generated periodically, choose a frequency and click Save. When it's time to regenerate the sitemaps, the service will automatically spider your website, regenerate all sitemaps and the RSS Feed, FTP and/or copy the files to your website (if preferences are set) and notify Google.

11. Help/Support

An online forum is available 24 hour a day at <http://forums.keylimetie.com>. We made this forum available inside the application as well. From here, you can read forum entries, report issues and made suggestions.



The screenshot shows the KeyLimeTie Sitemap Generator v5.0 application window. The title bar reads "KeyLimeTie Sitemap Generator v5.0". The application has a dark header with the KeyLimeTie logo (a green lime slice) and the text "keylimetie™ SitemapGenerator 5.0". Below the header is a navigation menu with tabs: "Start", "My Websites", "Preferences", "Spider Website", "Edit Results", "Sitemaps", "Scheduling", and "Help/Support". The "Help/Support" tab is active, displaying the "KeyLimeTie Forums" section. The forum page shows the current time as 10:49:23 AM and the user's last visit as Wednesday, January 30, 2008 10:49:23 AM. A table lists various forum categories and topics. At the bottom, there are sections for "Information" (Active Users) and "Active Discussions" (Latest Posts).

Forum	Topics	Posts	Last Post
Google Sitemap Generator			
Google Sitemap Generator - All versions General questions that apply to all versions	9	30	Wednesday, June 06, 2007 12:04 PM in Licenses now automatically generated by KeyLimeTie
Google Sitemap Generator v3.0+ Questions regarding Google Sitemap Generator v3.0 and v3.1	2	2	Thursday, March 22, 2007 12:14 PM in How to upgrade from v3.1 to v4.0 or higher by KeyLimeTie
Google Sitemap Generator v4.0+ Questions regarding Google Sitemap Generator v4.0, v4.1 and v4.2	85	374	Yesterday at 11:46:11 PM in When will the new version be released by KeyLimeTie
Google Sitemap Generator v5.0+ Questions regarding Google Sitemap Generator v5.0	1	1	Yesterday at 11:22:30 PM in Lots of announcements.. by KeyLimeTie
Comments, Suggestions and Feature Requests Comments, suggestions, feature requests...	33	128	Tuesday, January 15, 2008 1:03 PM in Can't see through Freeparking redirection by KeyLimeTie
Content Management System (CMS)			
Content Management System (CMS) v1.0 Questions regarding Content Management System (CMS) v1.0	2	2	Monday, November 12, 2007 2:58 PM in Updates to CMS Release by KeyLimeTie

Information
Active Users

Active Discussions
Latest Posts

Setup your Google Account

In order to participate in the Google Sitemap program, you need to setup a Google Account. It's very easy and only takes approximately 10-15 minutes.

1. Navigate to Google Webmaster Central: <http://www.google.com/webmasters/>
2. Click the "Webmaster tools (including Sitemaps)" link.



[Webmaster tools \(including Sitemaps\)](#)

Statistics, diagnostics and management of Google's crawling and indexing of your website, including Sitemap submission and reporting.

3. On the right side of the page is an area to login or create an account. Click the "Create a Google Account" link.

Not using Gmail or other Google Account services?

[Create a Google Account](#)

4. Fill in all of the form fields and click the button to create an account.
5. An email will be sent to you. Open that email and click the link to verify your account.

Subject: Google Email Verification

Welcome to Google Accounts. To activate your account and verify your e-mail address, please click on the following link:

<http://www.google.com/accounts/VE?c=...>

If you have received this mail in error, you do not need to take any action to cancel the account. The account will not be activated, and you will not receive any further emails.

If clicking the link above does not work, copy and paste the URL in a new browser window instead.


Thank you for using Google.

6. Your account will now be verified. Click the "Click here to continue." link.
7. Now you want to add your website. Enter your website URL and click OK.

Sites

Add Site

- You will be taken to a page where you now need to verify you are the owner of the website. Click the "Verify your site" link.

 **Next Step**
[Verify your site](#). By verifying your site you can

- Choose "Upload an HTML file" and the web page will tell you what to name that file. Now open Notepad and save the empty file as the name Google told you to name it. Or open your website authoring software (Frontpage, etc.), add a new webpage and name it what Google told you to name it. Finally, FTP the file to your website.

Verify a Site [\[?\]](#)

www.keylimetie.com ▼

Verification status: NOT VERIFIED

Once you verify that you're the site owner, we can provide you with comprehensive statistics and error information, submit Sitemaps, and see detailed information about those Sitemaps as well as basic information about your site.

We offer two methods of verification. You can either upload an HTML file with a name we specify, or you can use a meta tag.

▼

Create the HTML verification file specified below and upload it to <http://www.keylimetie.com/>. [\[?\]](#)

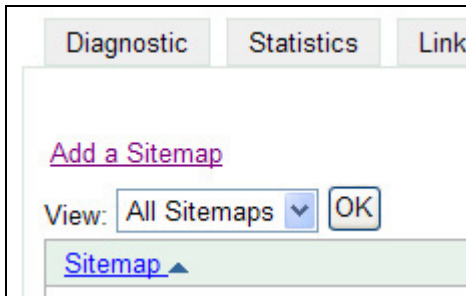
googledc3f468a588f85c6.html

- I've created a file named **googledc3f468a588f85c6.html**.
- I've uploaded the file to **<http://www.keylimetie.com/>** and can view <http://www.keylimetie.com/googledc3f468a588f85c6.html>.

- Once the file is on your website, click the "Verify" button on the Google web page. Google will now know you're the owner of the website.
- Click the "Sitemaps" tab at the top of the Google webpage.

Diagnostic Statistics Links Sitemaps

- Click the "Add a Sitemap" link.



13. Choose "Add General Web Sitemap" and enter in the full path of your Google sitemap. It should be `http://www.yourwebsite.com/sitemap.xml`. Now click "Add Web Sitemap".



Google is now aware of your sitemap and should download it within 24-48 hours (maybe even sooner). You no longer need to visit this site as you can "Notify Google" from the Sitemap Generator. We do recommend you visit this area every once in awhile to view your sitemap statistics and make sure your sitemap doesn't have any errors.